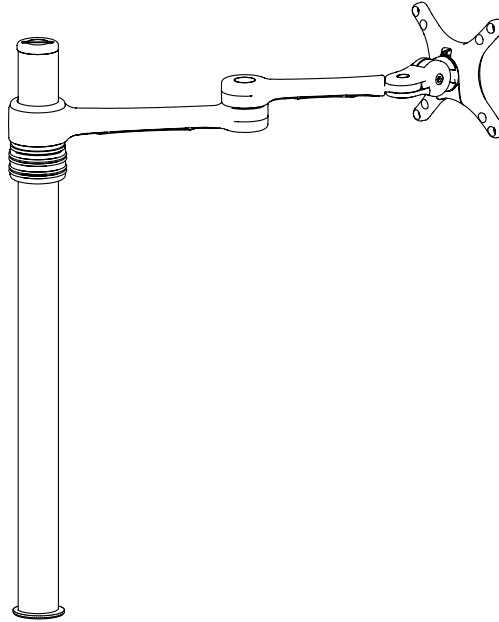
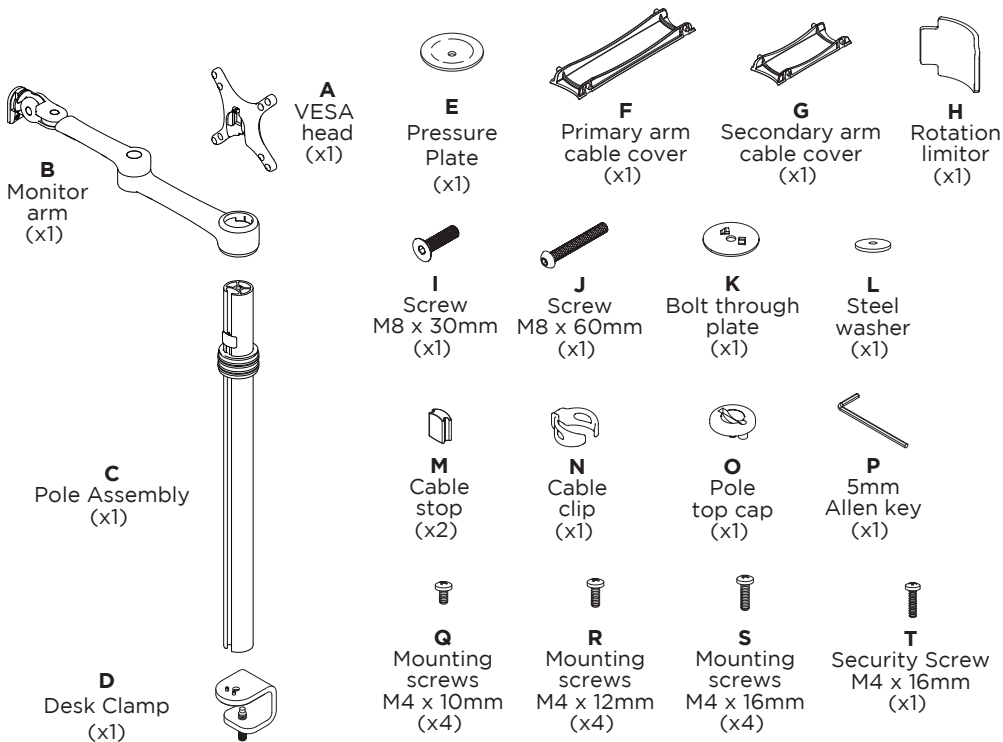


## Single Arm Desktop Monitor Mount - C Clamp



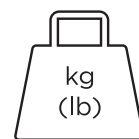
### COMPONENT CHECKLIST



### REQUIRED TOOLS

- Power Drill
- Drill Bit
- Phillips Head Screwdriver

### WEIGHT RANGE



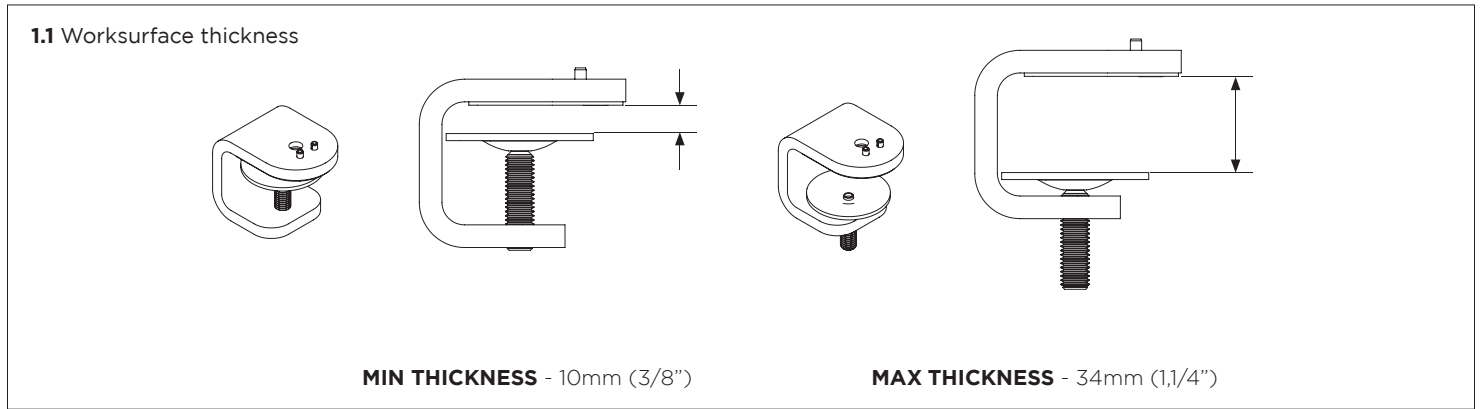
kg  
(lb)

0 - 8kg  
(0 - 17.6lbs)

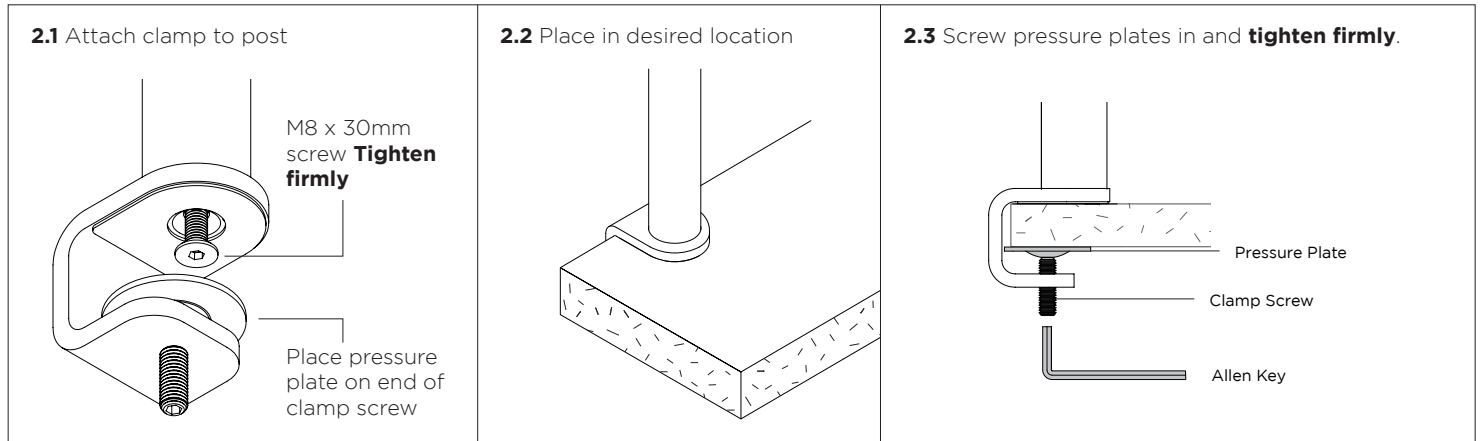
### IMPORTANT INFORMATION

- ! Please ensure this product is installed as per these installation instructions.
- ! This product is compatible with the range of AF Poles and arms.
- ! The manufacturer accepts no responsibility for incorrect installation.

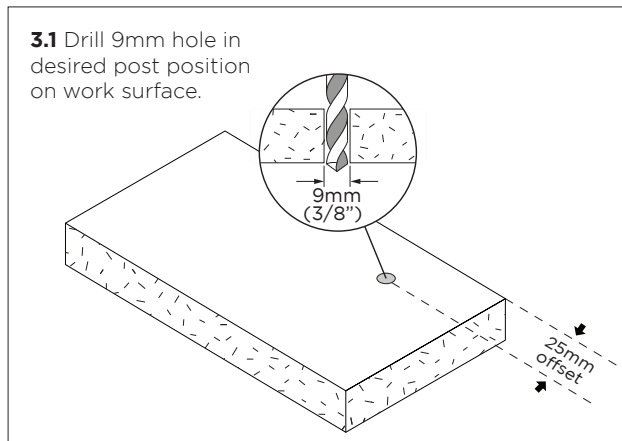
# 1. Desk overview



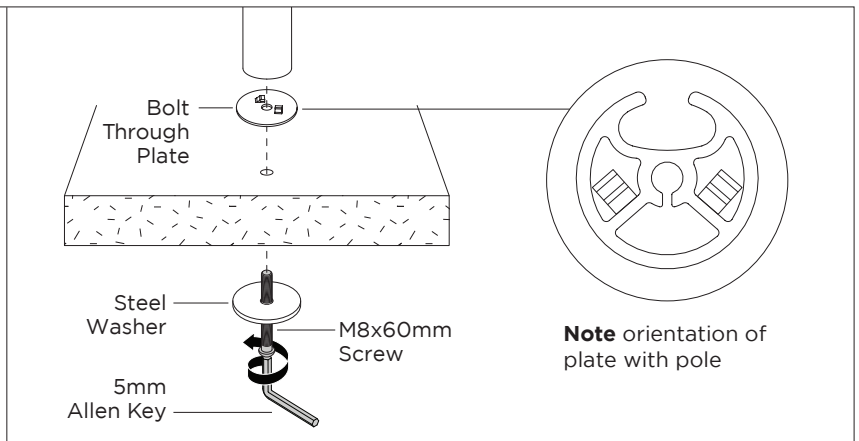
# 2. Post mount configuration



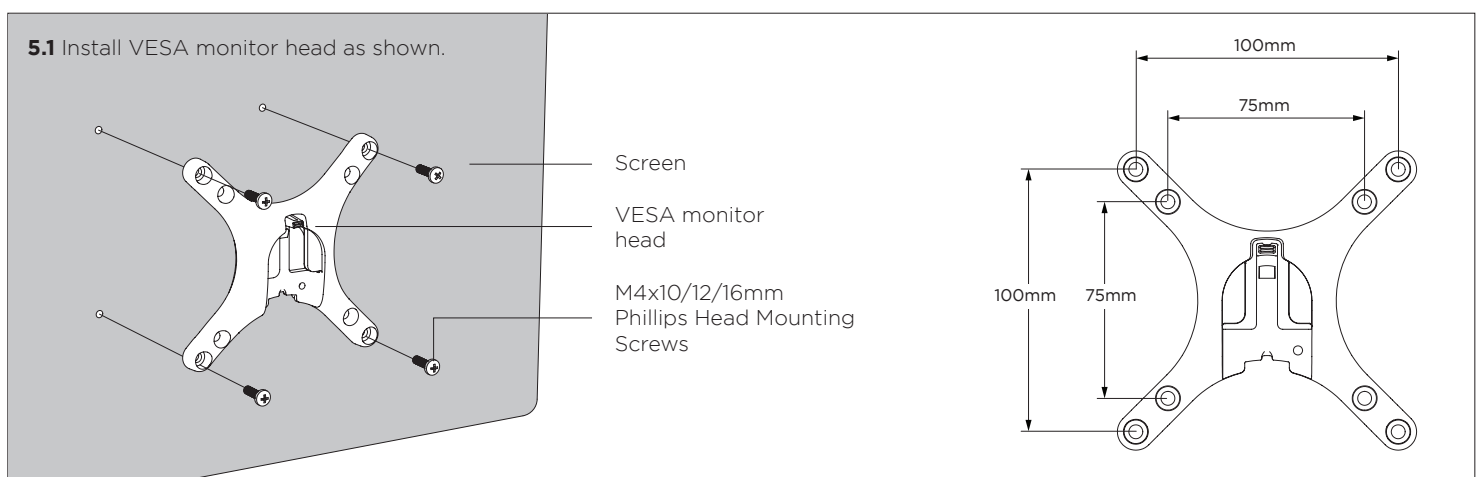
# 3. Bolt through - Drill Hole



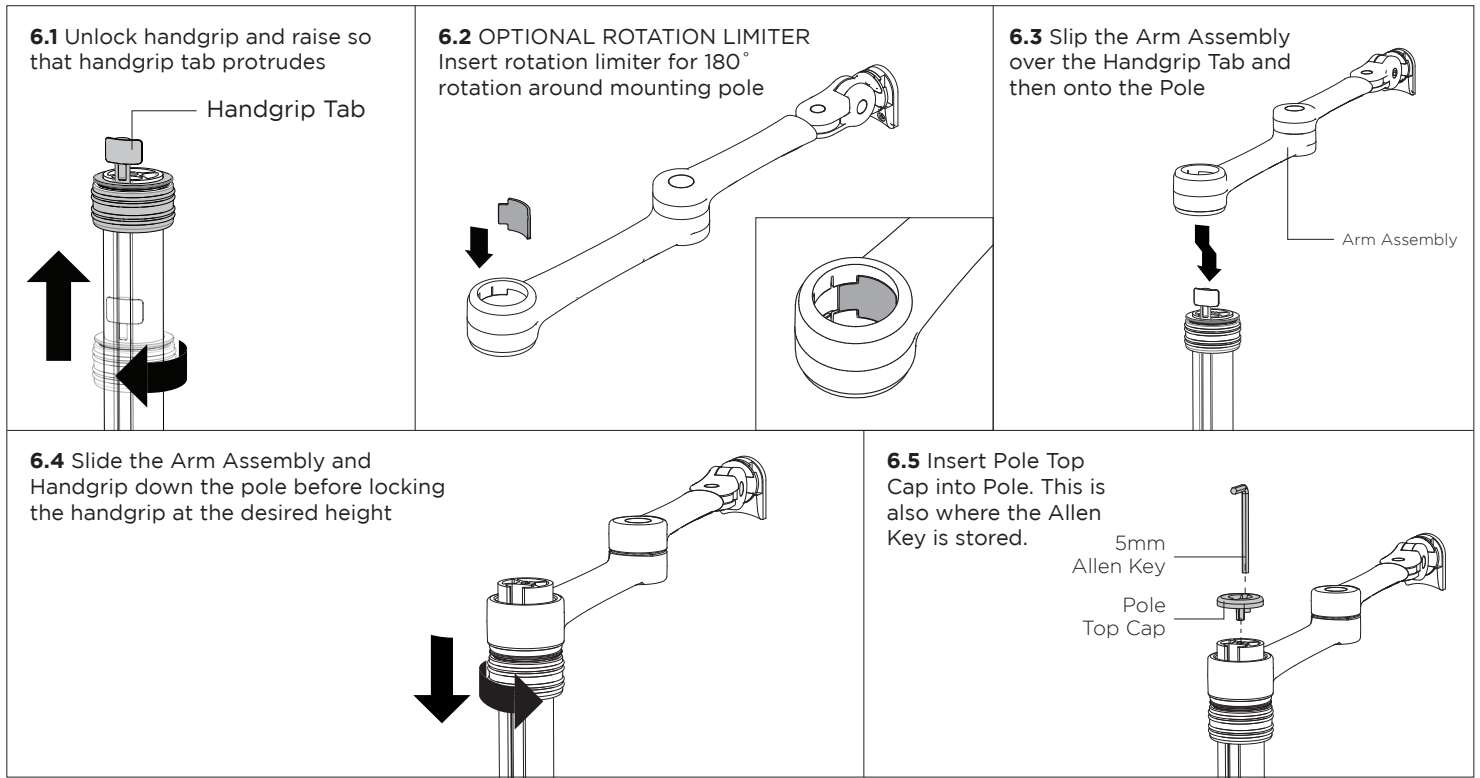
# 4. Bolt Pole to work surface



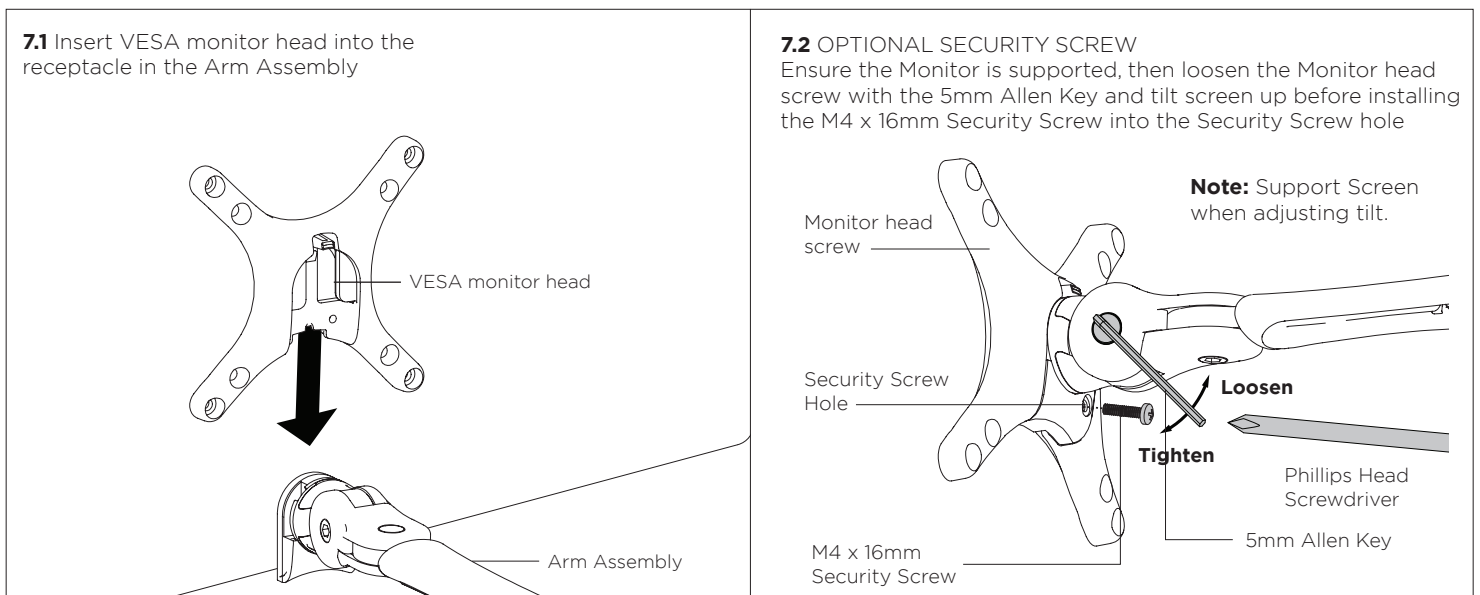
# 5. Install VESA monitor head



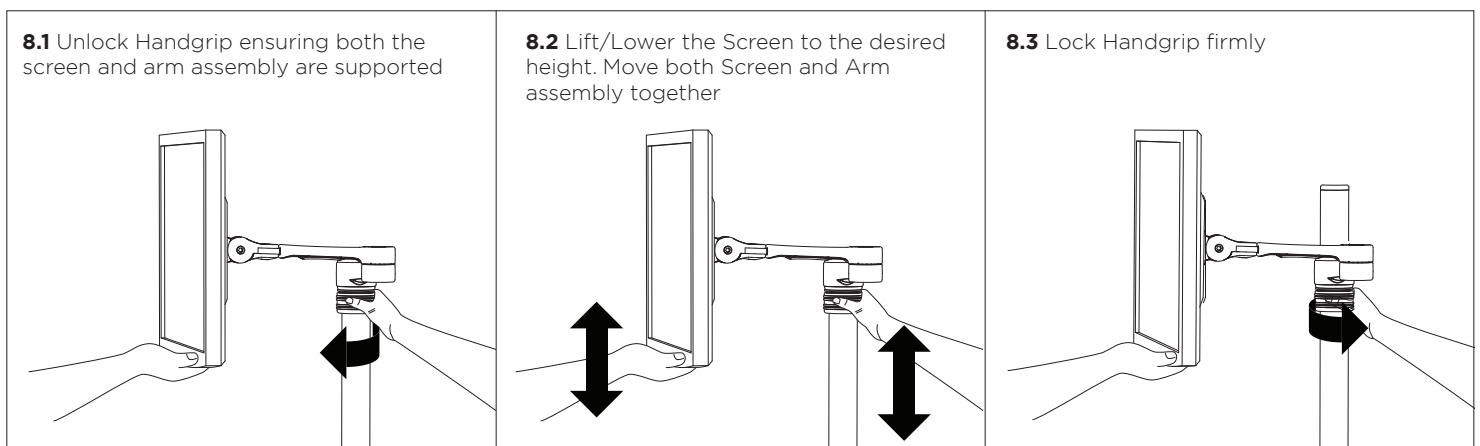
## 6. Install arm assembly



## 7. Mounting Monitor

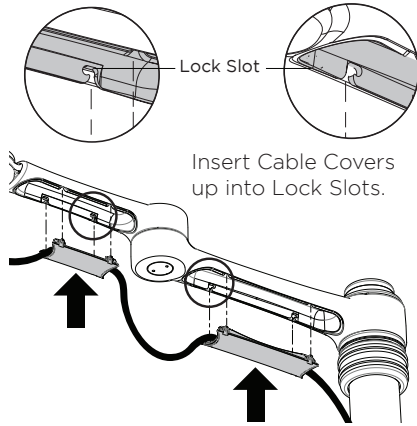


## 8. Adjusting Height

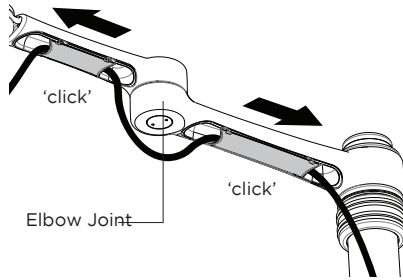


## 9. Cable Management

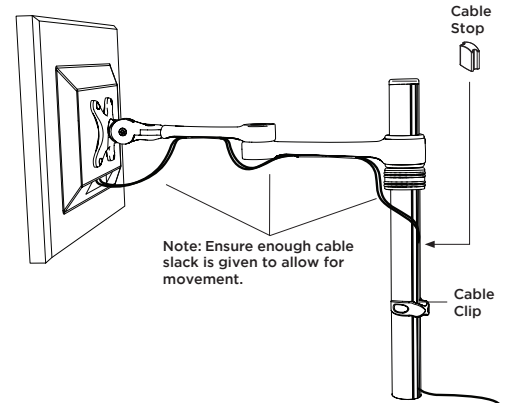
**9.1** After plugging in your cables, install the Cable Covers.



**9.2** Push Cable Covers away from Elbow Joint to secure in place.

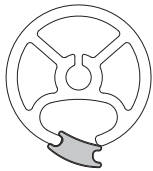


**9.3** Cable Clips and Cable Stops can be installed to further manage cables.

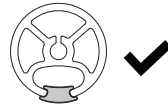


## 10. Insert Cable Stops

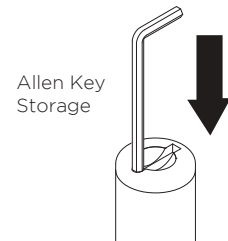
**10.1** Insert Cable Stop on one edge of the Pole Slot



**Note:** Press down firmly onto the other edge of the Cable Stop and hold. This allows the rear profile to flex in place

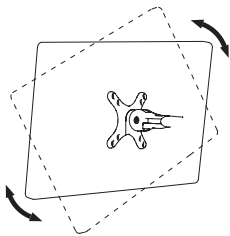


**10.2** Insert allen key into top cap on pole



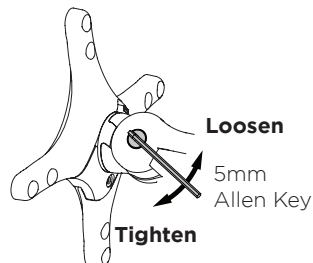
## 11. Adjusting the Display Bracket

**Portrait/ Landscape**



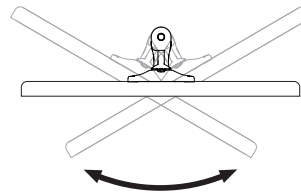
**No Allen Key necessary**

**Tilt (Screen angle up/down)**



**Note:** Support Screen when adjusting tilt.

**Pan (Screen angle left/right)**



**No Allen Key necessary**

**VESA 75 x 75 / 100 x 100mm**

