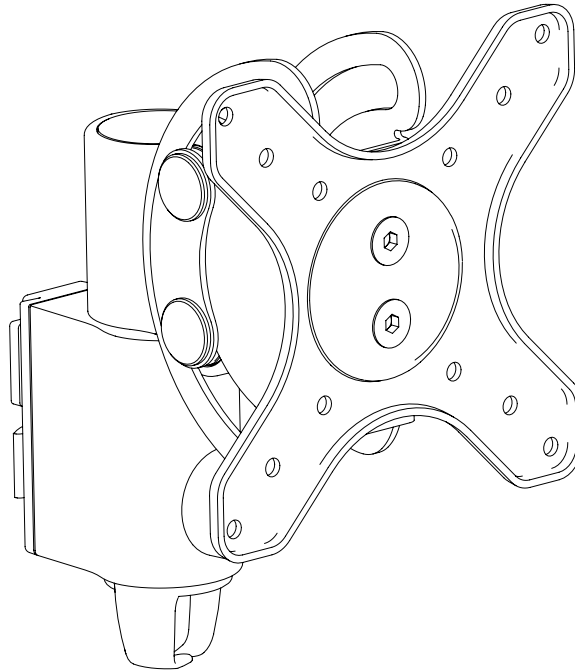
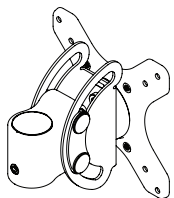


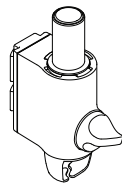
# AWM 130 Arm Heavy Duty



### COMPONENT CHECKLIST



**A**  
Heavy Duty Tilt Head  
(x1)



**B**  
Channel Clamp  
(x1)



**C**  
Screw  
M4x25mm  
(x4)



**D**  
Screw  
M4x16mm  
(x4)



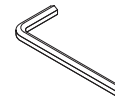
**E**  
Screw  
M4x12mm  
(x4)



**F**  
Spacer  
(x4)



**G**  
Security  
screw  
(x4)



**H**  
4mm  
Hex Key  
(x1)

Desk 

### REQUIRED TOOLS

- Phillips Head Screwdriver

### WEIGHT RANGE

#### Flat Monitors

0 - 18kg  
(0 - 40lbs)

#### Curved Monitors

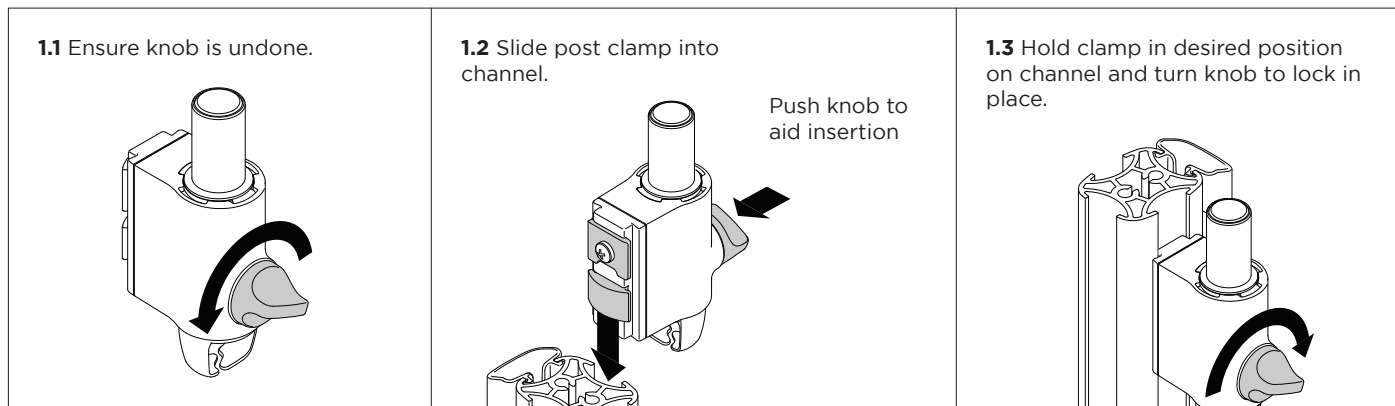
0 - 12kg  
(0 - 26.5lbs)

Monitor weight should be within the weight range of all modular elements that make up the complete monitor mounting solution.

### IMPORTANT INFORMATION

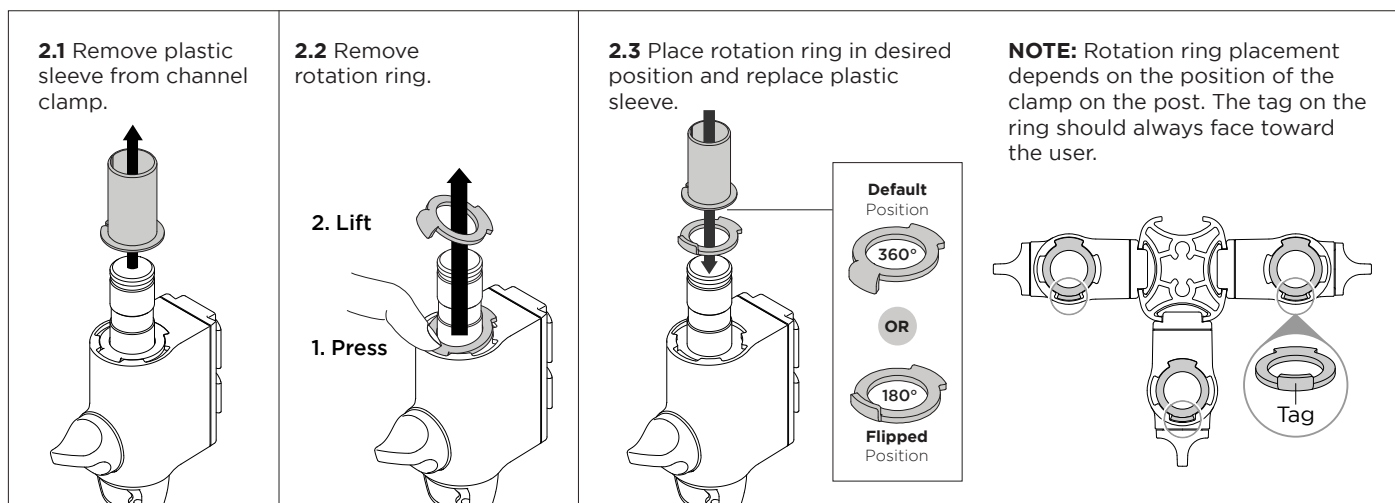
- ! Please ensure this product is installed as per these installation instructions.
- ! Do not remove or throw away the plastic sleeve on the channel clamp.
- ! The manufacturer accepts no responsibility for incorrect installation.
- ! This product is compatible with Atdec AWM Series products **except** the Wall Channel products (including AWM-W6 and AWM-W35)
- ! Curved monitors, deep devices (such as all-in-one PCs), VESA mounted accessories (such as mini PC brackets and mounts), and offset VESA locations exert additional leverage that can exceed the capacity of the mount even though the monitor weight may be within the stated range. Please contact Atdec if you would like further information.

## 1. Fix clamp to Post

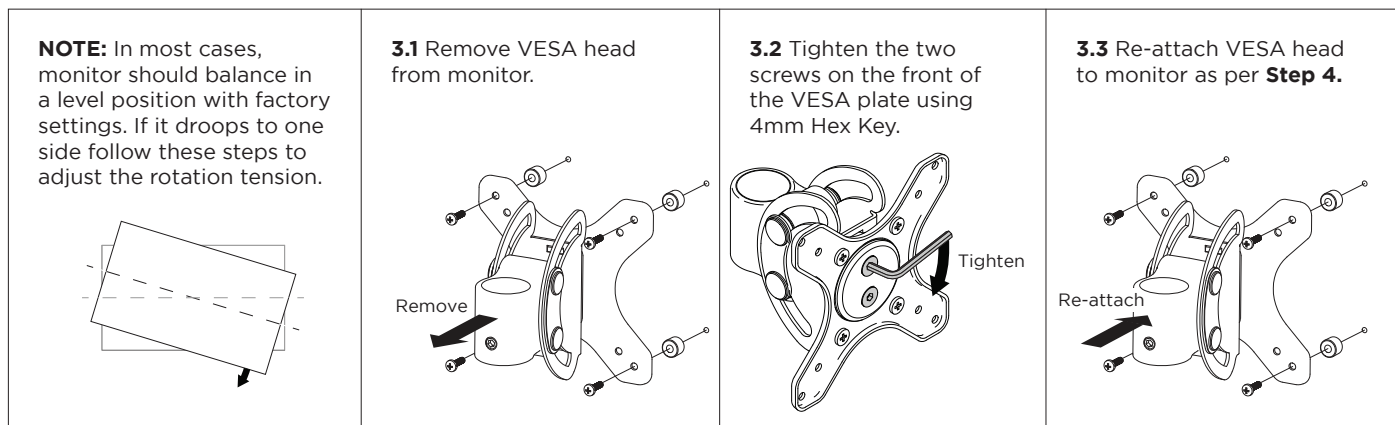


## 2. Set arm rotation to 180° (optional)

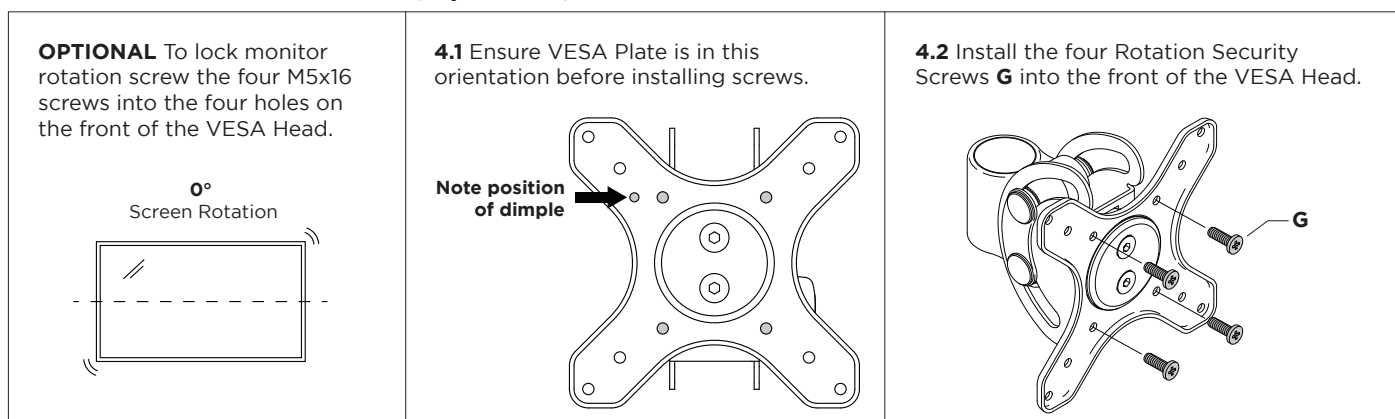
Note rotation is set to 360° by default.



## 3. Adjust rotation tension (Optional)

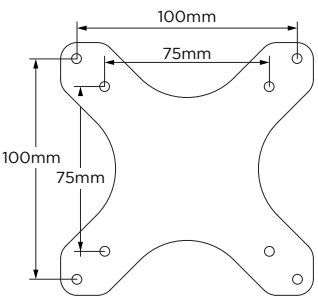


## 4. Lock monitor rotation (Optional)



## 5. Attach VESA head to monitor

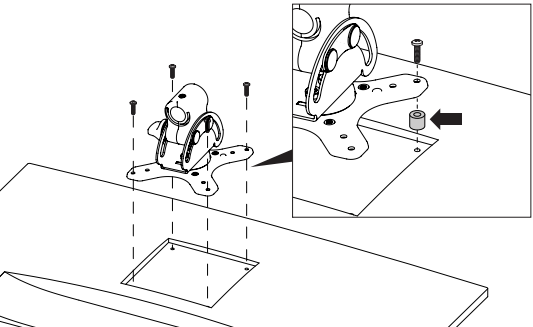
**5.1** Check VESA mounting compatibility



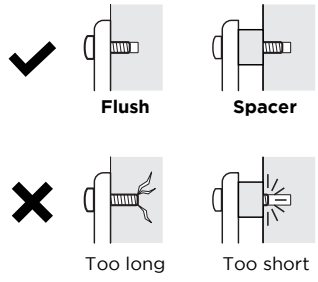
**NOTE:** For other sizes, use a suitable adaptor plate (sold separately).

**5.2** Attach VESA head onto monitor with provided screws.

**NOTE:** Spacers may be required for curved, recessed or uneven monitor surfaces.

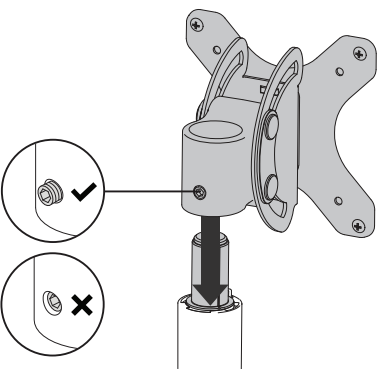


**NOTE:** be sure to use a screw length that suits the monitor.



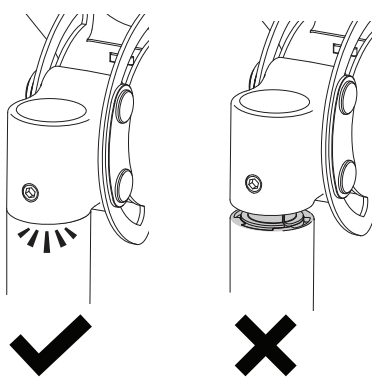
## 6. Mount monitor onto arm

**6.1** Push tilt head onto the shaft at the end of the monitor arm, grub screw must be backed off at this time.

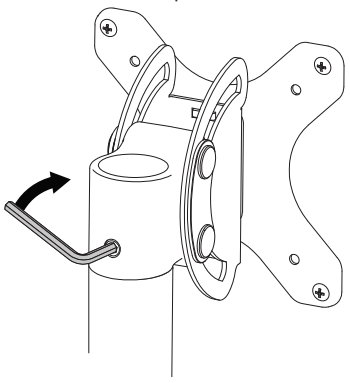


**NOTE:** Ensure plastic sleeve is on shaft before fitting tilt head.

**6.2** Ensure tilt head is fully pushed onto shaft.



**6.3** Tighten the joint screw with 4mm Hex Key to secure the tilt head and monitor in place.

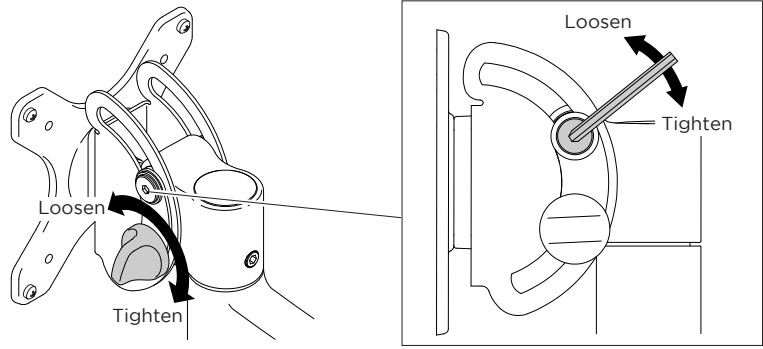


**NOTE:** Check the head pan adjustment is smooth after tightening.

## 7. Adjust tilt tension

Use the knob to tighten and loosen the tilt tension to suit your monitor weight.

**NOTE:** Always support the monitor whilst adjusting to prevent it from falling forward sharply.



**IMPORTANT**  
If extra tilt tension is required for your monitor, use 4mm Hex Key to tighten second tilt screw.