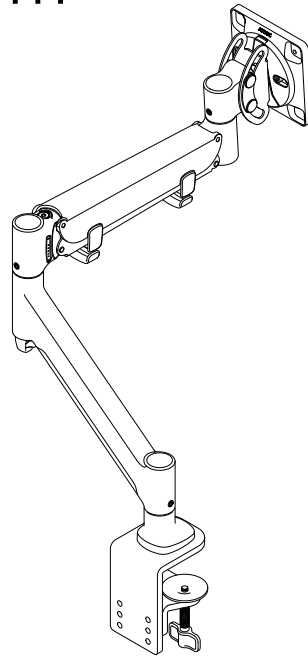
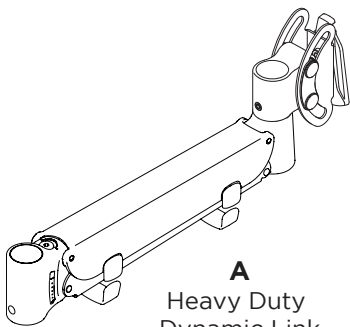


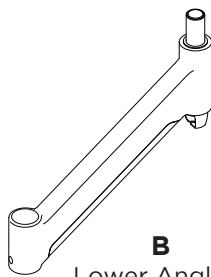
Fortis Monitor Arm



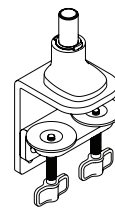
COMPONENT CHECKLIST



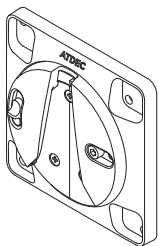
A
Heavy Duty
Dynamic Link
(x1)



B
Lower Angled
Link
(x1)



C
Heavy Duty
F Clamp
(x1)



D
VESA Head
(x1)



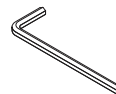
E
Screw
M4x10mm
(x4)



F
Security
Screw
(x1)



G
4mm
Hex Key
(x1)



H
5mm
Hex Key
(x1)

Desk 

REQUIRED TOOLS

- Phillips Head Screwdriver

CAPACITY

Flat Monitors
6 - 16kg
(13.5 - 35lbs)

Curved Monitors
6 - 12kg
(13.5 - 26.5lbs)

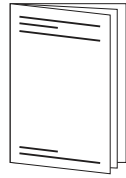
Monitor weight should be within the weight range of all modular elements that make up the complete monitor mounting solution.

IMPORTANT INFORMATION

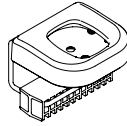
- ! Please ensure this product is installed as per these installation instructions.
- ! Do not remove or throw away the plastic sleeve on the arm links and base.
- ! The manufacturer accepts no responsibility for incorrect installation.
- ! This product is not suitable for outdoor use or mobile applications.
- ! Do not over-tighten screws and adjustment points on product.
- ! Periodic adjustment to counterbalance and tilt tension may be required.
- ! VESA mounted accessories (such as mini PC brackets and mounts), offset VESA locations, and unevenly weighted monitors (relative to the center of the VESA mounting interface) exert additional leverage that can exceed the capacity of the mount even though the monitor weight may be within the stated range. Please contact Atdec if you would like further information.

Alternative desk fixing options

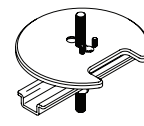
Follow the installation guide provided with the preferred fixing to attach the Base and fit it to the worksurface.



Alternative AWM Fixing options Sold separately



C Clamp
AWM-FC

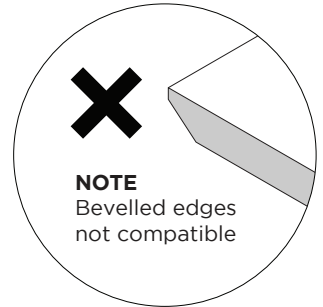
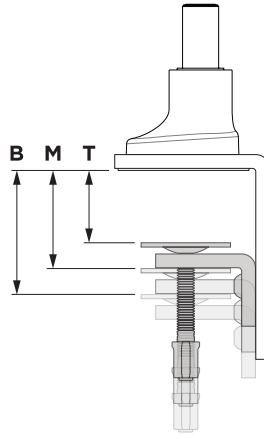


Grommet Clamp
AC-GC

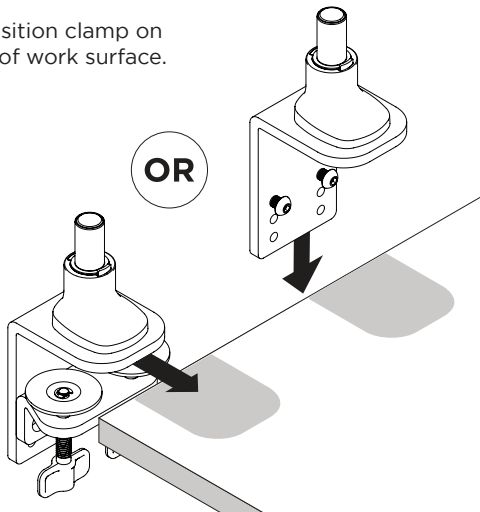
1. Attach Clamp to Desk

1.1 Measure the worksurface thickness and choose the suitable lower clamp position. Default position is in the Top height.

- Top (T)** 4 - 42mm ($\frac{1}{25}$ " - $1 \frac{13}{20}$ ")
- Middle (M)** 19 - 57mm ($\frac{3}{4}$ " - $2 \frac{9}{25}$ ")
- Bottom (B)** 34 - 72mm ($1 \frac{17}{50}$ " - $2 \frac{21}{25}$ ")

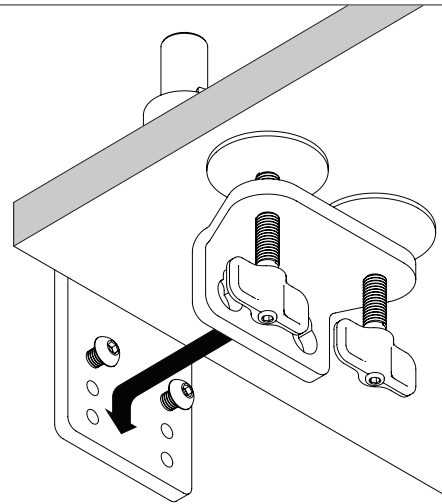


1.2 Position clamp on edge of work surface.

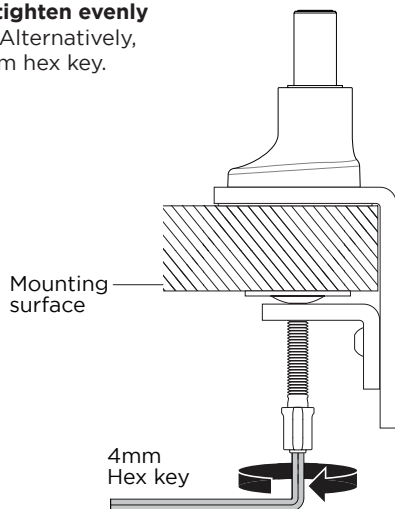


HINT

If the gap behind the work surface is less than 70mm ($2 \frac{3}{4}$ "), unhook the lower bracket and reattach it from under the desk.

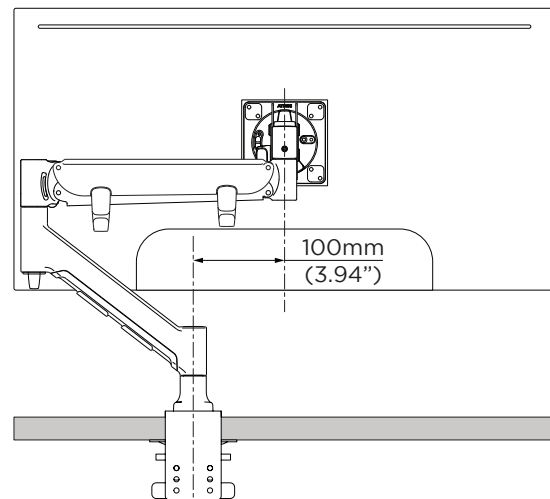


1.3 Screw in both pressure plates and **tighten evenly and firmly**. Alternatively, use the 4mm hex key.



TIP

When positioning the desk clamp, offset the clamp to the left or right of the seating position. The display will then be centred for the user.

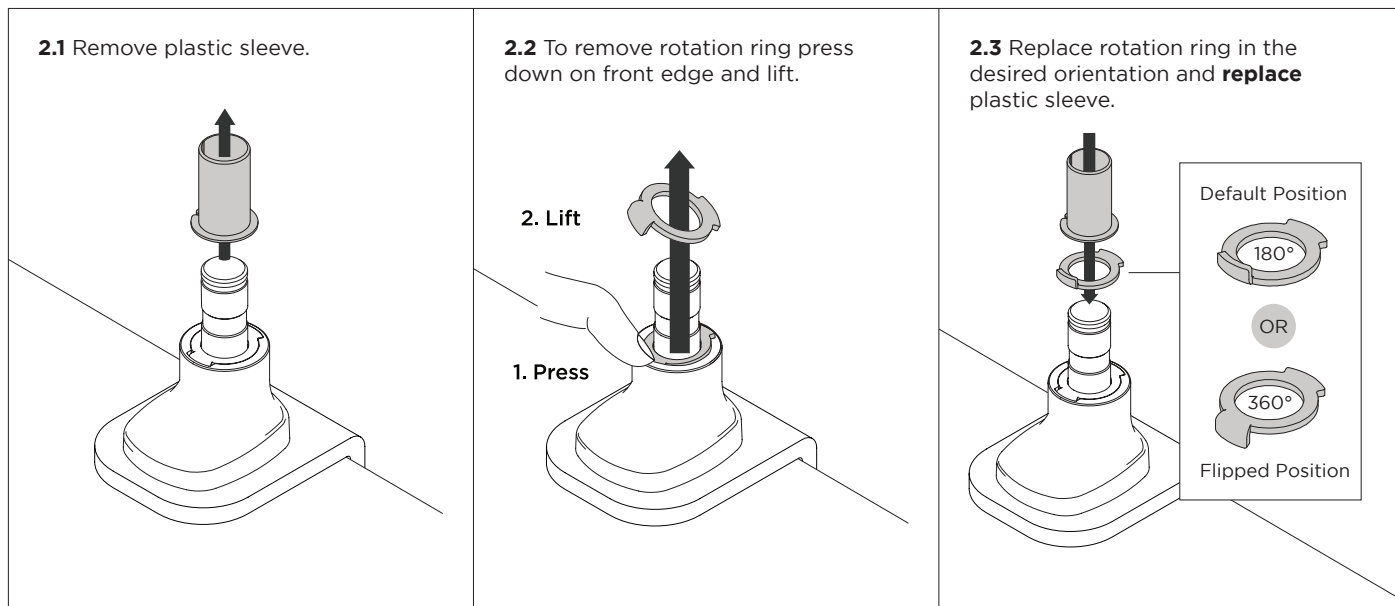


IMPORTANT

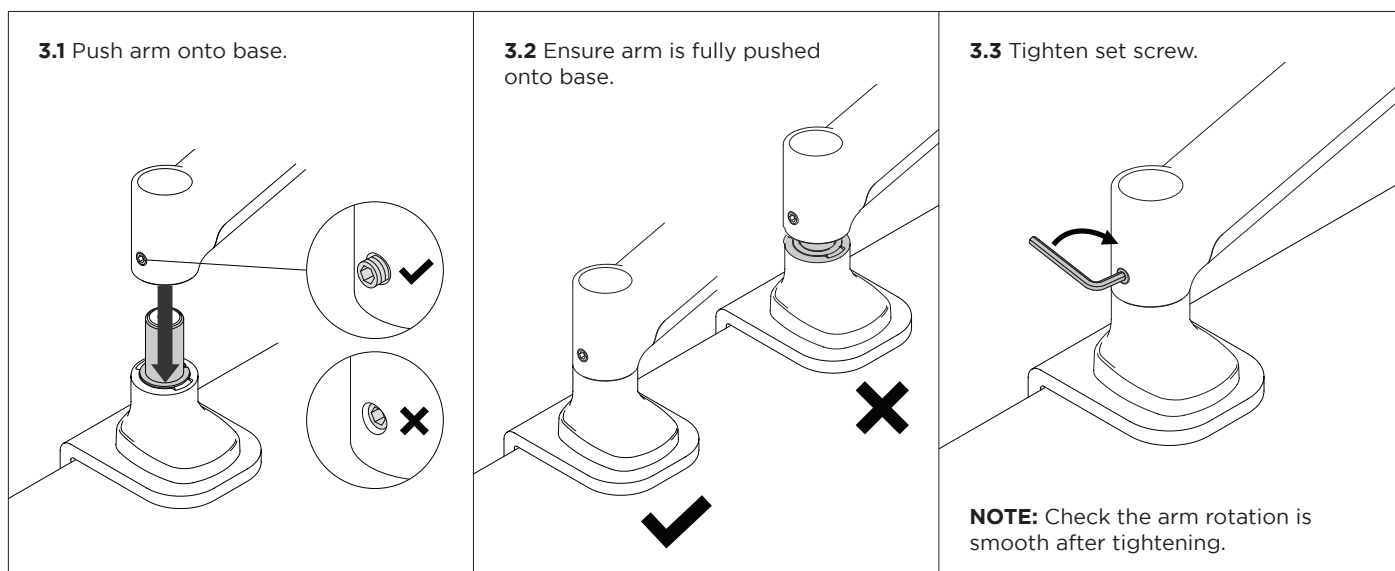
Ensure clamp is pushed up against desk edge.

2. (OPTIONAL) Set arm rotation to 360°

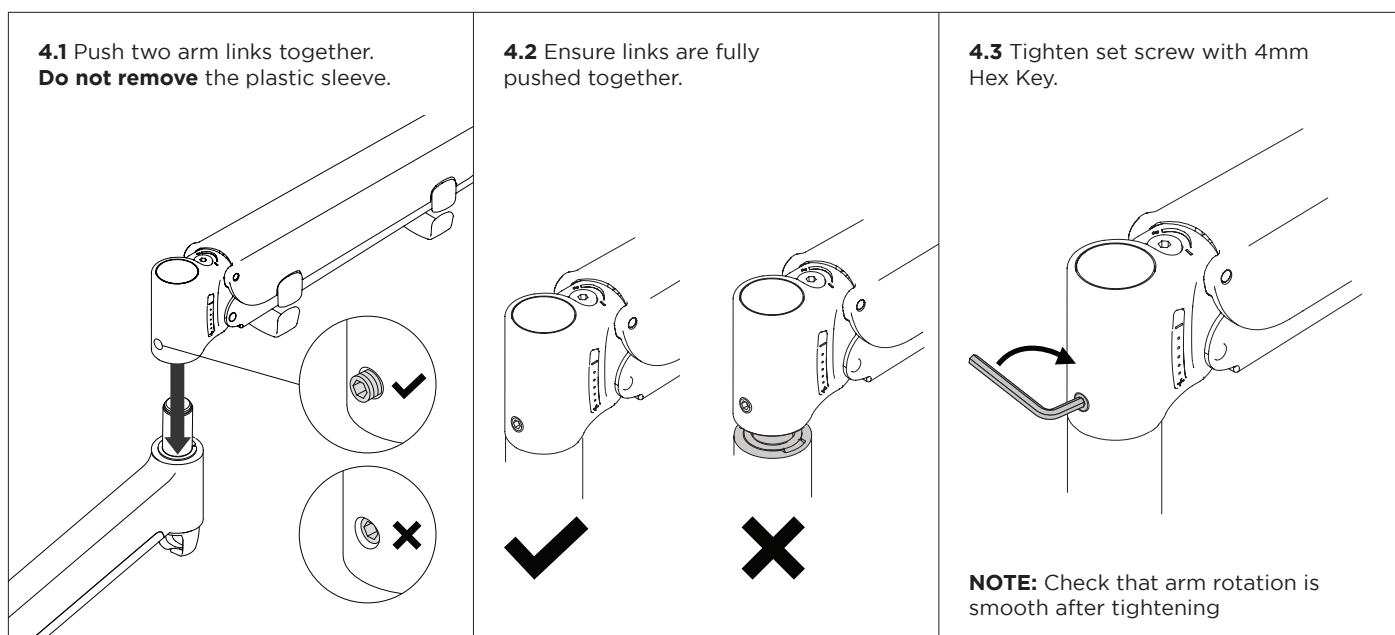
NOTE: Rotation is set to 180° by default.



3. Fit Arm onto Base



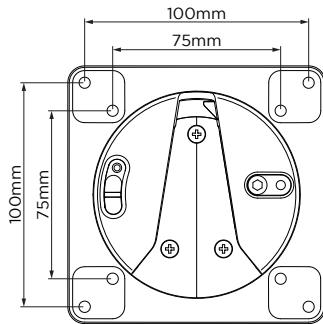
4. Assemble Arm Links



5. Attach VESA head to monitor

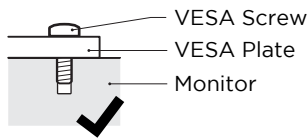
5.1 Check VESA mounting compatibility of monitor.

NOTE: For other sizes, use a suitable adaptor plate (sold separately).

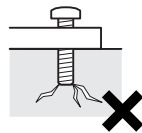


NOTE: Ensure screw length suits the monitor VESA mounting holes.

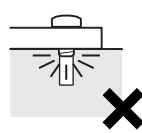
OK



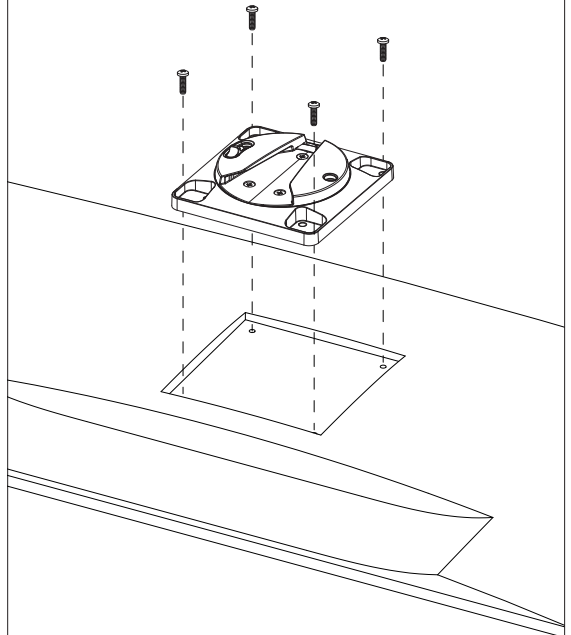
Too long



Too short

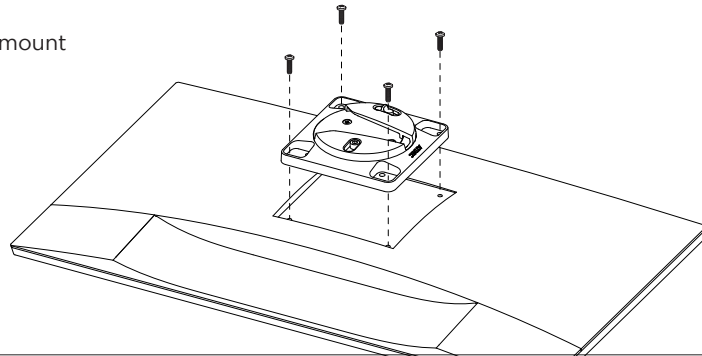


5.2 Attach VESA head onto monitor with provided screws. (Alternatively, use fasteners specified by the monitor manufacturer).



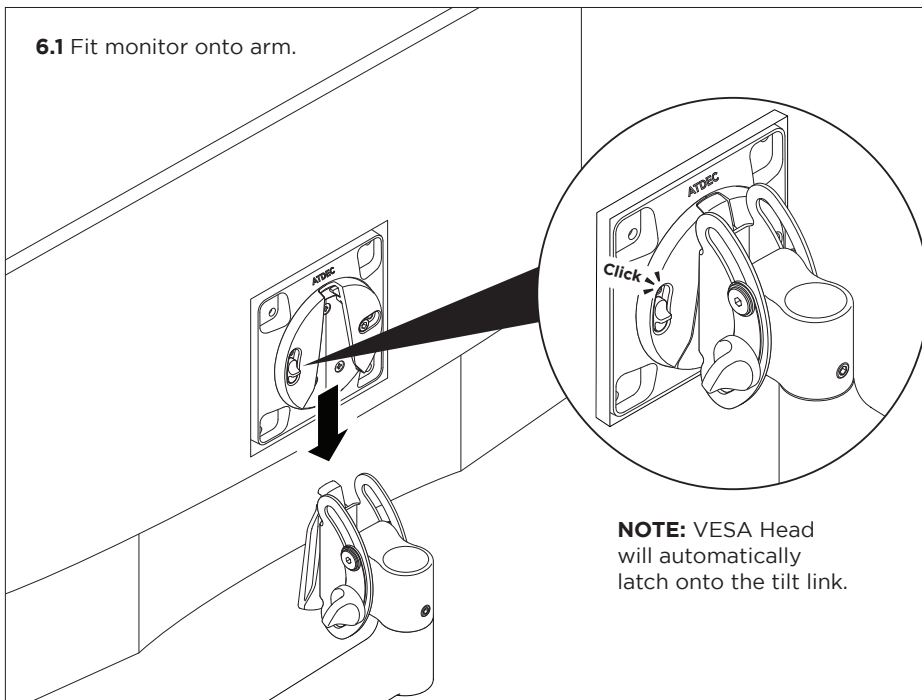
TIP!

To allow monitor to be rotated upside down, mount VESA head in the alternate orientation shown.



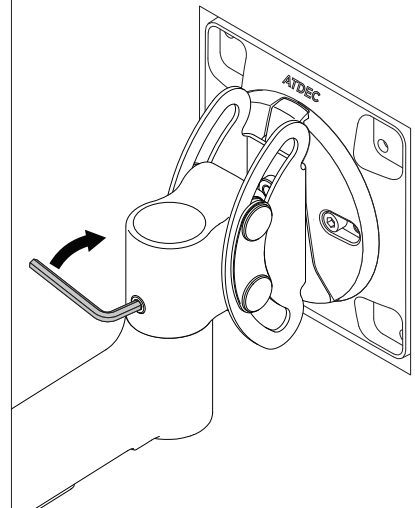
6. Attach monitor to arm

6.1 Fit monitor onto arm.



6.2 Tighten the joint screw with 4mm Hex Key.

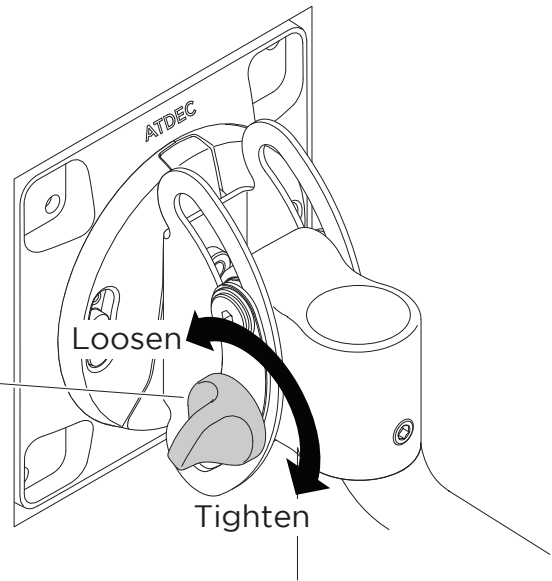
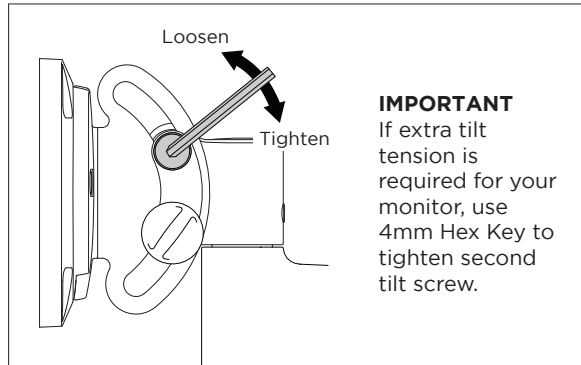
NOTE: Check the tilt head rotation is smooth after tightening.



7. Adjust tilt tension

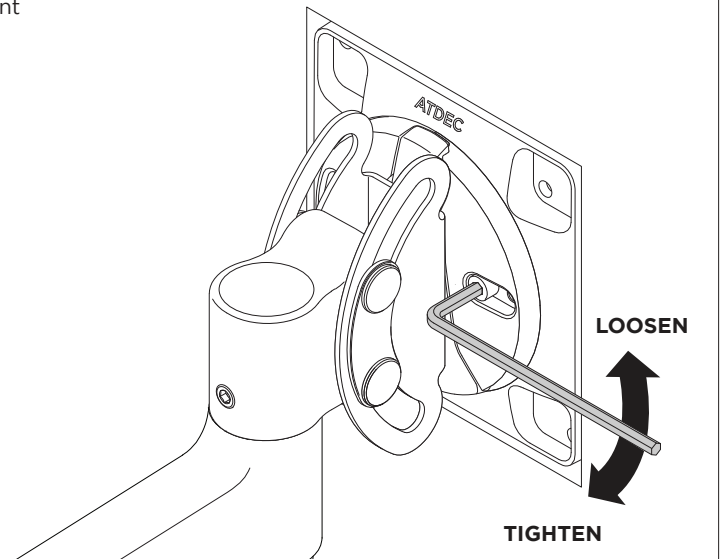
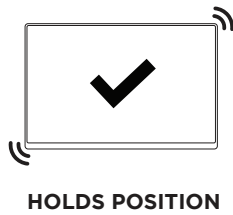
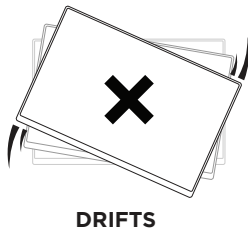
7.1 Use the knob to tighten and loosen the tilt tension to suit your monitor weight.

NOTE: Always support the monitor whilst adjusting to prevent it from falling forward sharply.



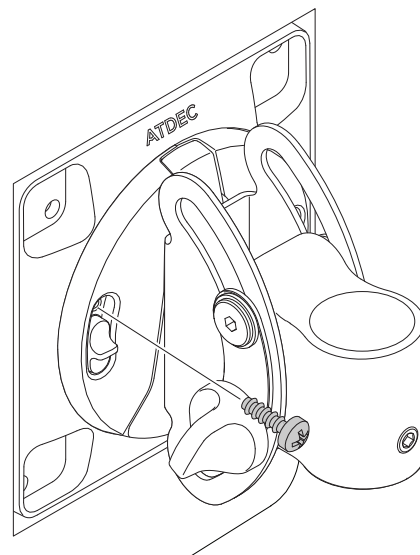
8. (OPTIONAL) Adjust rotation tension

8.1 Adjust the rotation tension using 4mm Hex Key. Adjustment may only be required for large or ultrawide monitors.



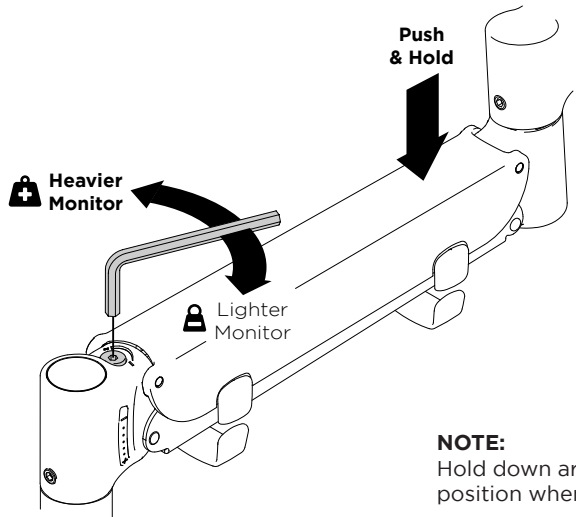
9. (OPTIONAL) Attach security screw

9.1 Once monitor is attached to the arm, install the security screw. This disables the release switch, preventing theft.



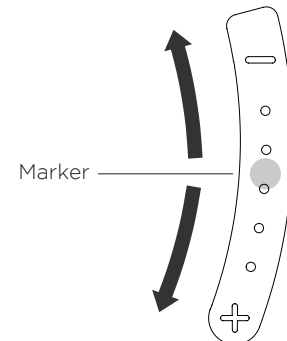
10. Adjust arm tension

10.1 Use the provided 4mm Hex Key to adjust the arm tension.

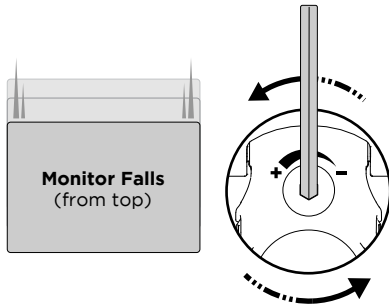


10.2 Installing multiple similar monitors?

1. Set up one monitor and record the position of the marker on the gauge.
2. When installing other similar monitors, pre-tension the arm to the recorded marker position then fine-tune the tension by following steps **10.3** to **10.5**.

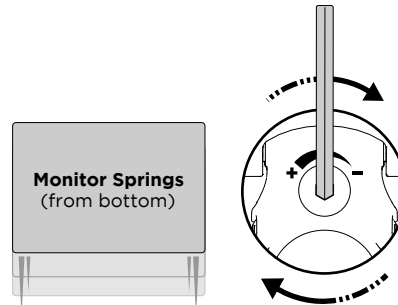


10.3 If the monitor sags or falls down, increase the arms tension by rotating the screw anti-clockwise.



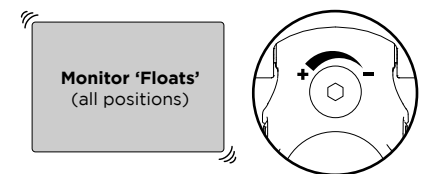
+ Increase Tension

10.4 If the monitor springs upwards, decrease the arms tension by rotating the screw clockwise.



- Reduce Tension

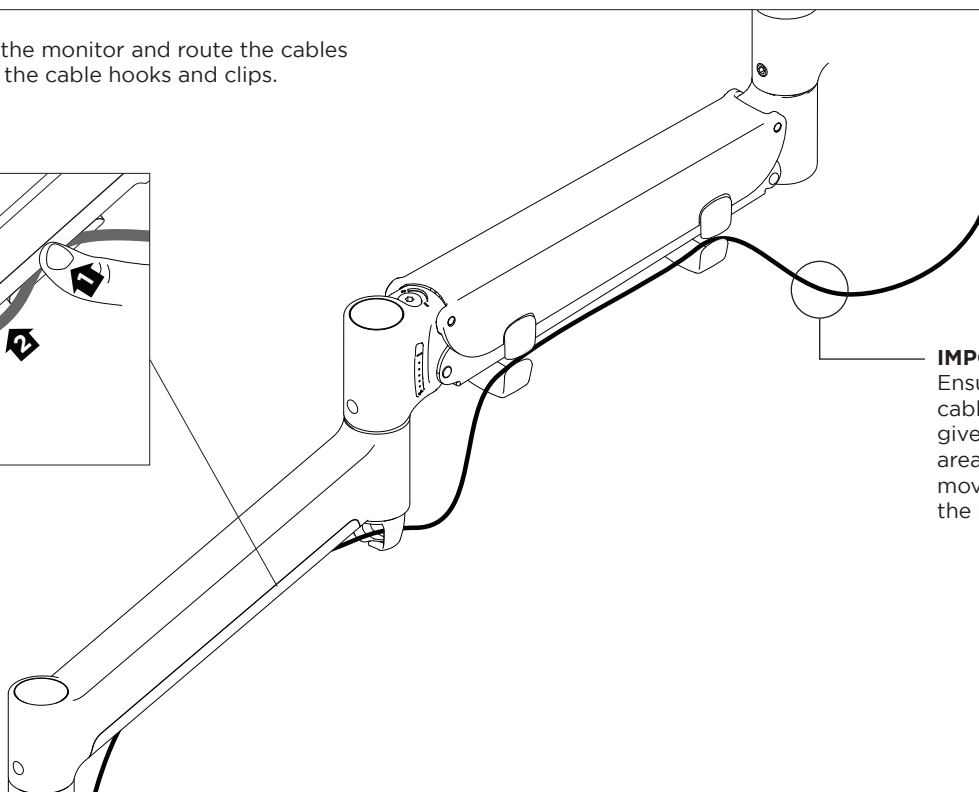
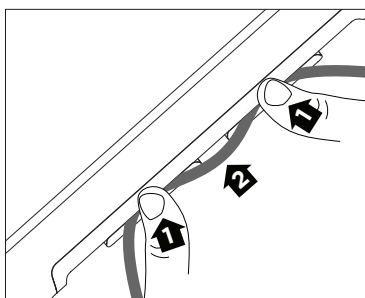
10.5 If the monitor floats or hovers in all positions the arm tension is balanced and does not require further adjustment.



✓ Balanced

11. Cable management

11.1 Plug cables into the monitor and route the cables down the arm using the cable hooks and clips.



IMPORTANT!
Ensure enough cable slack is given in this area to allow for movement of the monitor.