

# Heavy Duty Mounts

FOR LARGE, HEAVY, & DEEPLY CURVED DISPLAYS

**Atdec Modular to mount large, heavy, & ultrawide monitors, including R1000.**

A collection of mounting solutions for monitors to 57" and 18kg (40lb), with curvature depth to 300mm (12"). Designed for new generation monitors.





## Mounting ultrawide monitors to a desk

**IMPORTANT:** all capacities are listed per monitor

### Single dynamic mount AWMS-HXB



Dynamic function and landscape to portrait rotation. Long vertical & horizontal reach plus  $-30^\circ$  to  $+35^\circ$  tilt. Available in silver, white, or black. Flat monitor capacity 16kg (35lb).

**Consists of:**

- 1 x AWM-LTHT head
- 1 x AWM-AHX dynamic arm
- 1 x AWM-LB base
- 1 x desk fixing

TO  
**12KG**  
OR  
**26.5LB**  
CURVED

← SINGLE DUAL →

### Dual display mount AWMS-2-LTH75



Dual vertically stacked mount on a tall post. Tilt adjustment  $-30^\circ$  to  $+35^\circ$  & pan  $\pm 90^\circ$ . Available in silver, white, or black. Flat monitor capacity 18kg (40lb) per monitor.

**Consists of:**

- 2 x AWM-LTHT head
- 2 x AWM-LC channel clamp
- 1 x AWM-P75G post
- 1 x desk fixing

### Single display on medium post AWMS-BT40



Single display solution mounted on a medium post. Tool-free adjustments; monitor tilt  $-8^\circ$  to  $+12^\circ$ , plus fine-tune height & levelling for perfect alignment. Available with silver or black post. Flat monitor capacity 25kg (55lb).

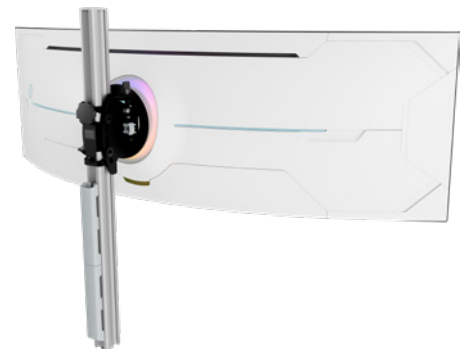
**Consists of:**

- 1 x AWM-BT tilt bracket
- 1 x AWM-P40G post
- 1 x desk fixing

TO  
**18KG**  
OR  
**40LB**  
CURVED

POST MOUNTED  
← MEDIUM TALL →

### Single display on tall post AWMS-BT75



Same specification as solution facing but on a tall post. This solution is preferred by physically tall users with the largest monitors such as G95NC 57" ultrawide . Flat monitor capacity 25kg (55lb).

**Consists of:**

- 1 x AWM-BT tilt bracket
- 1 x AWM-P75G post
- 1 x desk fixing



## Dual stacked monitors

TO  
**18KG**  
OR  
**40LB**  
CURVED

**Desk clamped stack**  
AWMS-2-BT75



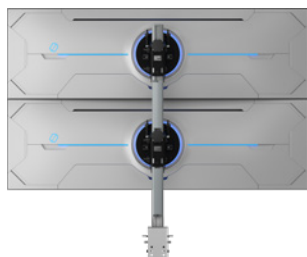
Desk clamped stack solution. Sturdy and reliable to handle two of these large deeply curved monitors, up to 57".

**Mount capacity per monitor:**

- Curved to 18kg (40lb)
- Flat to 25kg (55lb)

**Tool-free adjustments:**

- Tilt -8° to +12°
- Fine-tune height  $\pm 6\text{mm}$  ( $\frac{1}{4}$ " )
- Fine-tune levelling  $\pm 3^\circ$



Version with heavy duty F-clamp is assembled at our factory.

AWMS-2-BT75-H  
In silver & black.



Atdec Modular version with grommet clamp.

**Consists of:**

- 2 x AWM-BT tilt bracket
- 1 x AWM-P75G post
- 1 x AC-GC grommet

POST MOUNTED  
← CLAMP FREE →

**Freestanding mount**  
AWMS-2-BT75-FS



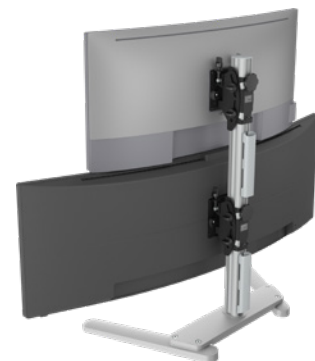
Freestanding version with sturdy base that sits on top of the desk. Foot design for minimal impact on desk workspace. For monitors to 55". Available in silver or black.

**Mount capacity per monitor:**

- Curved to 18kg (40lb)
- Flat to 25kg (55lb)

**Tool-free adjustments:**

- Tilt -8° to +12°
- Fine-tune height  $\pm 6\text{mm}$  ( $\frac{1}{4}$ " )
- Fine-tune levelling  $\pm 3^\circ$



All stacked BT. mounts handle asymmetric monitors.



## Futureproof desk mounts for enterprises & strategic facility management

### Innovative AWM-P40X stackable post

AWM-P40X is a medium post that can be easily stacked to double its height without disassembly of the mount. Ideal for enterprise workspaces so facilities teams can add or remove layers of monitors without disassembly of the mount and radically shorten the time taken to relocate teams.

### How AWM-P40X works



Single post is 400mm (15.7")



Remove cap



Add adaptor kit & extra post



Connect the posts



Stacked post is 800mm (31.5")

## AWM-P40X & AWM-BT solutions

Create any heavy duty modular mount with stackable posts.

### Single futureproof mount



Single display solution with one AWM-P40X post. Tool-free adjustments; monitor tilt  $-8^{\circ}$  to  $+12^{\circ}$ , fine-tune height  $\pm 6\text{mm}$  ( $\frac{1}{4}$ " ) & levelling  $\pm 3^{\circ}$ . Capacity 25kg (55lb) flat & 18kg (40lb) curved. Available in silver or black.

#### Consists of:

- 1 x AWM-P40X post
- 1 x AWM-BT tilt bracket
- 1 x desk fixing



POST MOUNTED

← SINGLE DUAL →

### Dual futureproof mount



Tool-free adjustments as for the single display mount. Capacity per monitor is 25kg (55lb) flat & 18kg (40lb) curved. Available in silver or black.

#### Consists of:

- 2 x AWM-P40X post
- 1 x AWM-X40 mount adaptor
- 2 x AWM-BT tilt bracket
- 1 x desk fixing



**Gaming monitors are larger, more curved, and heavier than ever.** More built-in tech makes them weight-imbalanced, which adds mounting complexity. Atdec mounts these monitors confidently, ergonomically, & securely for user wellness and peace of mind.



Atdec Uncover™ is where our infinite mounting possibilities become your specific mounting solutions.



**Call us to discuss your next project**