

AWMS-2-BT75

HEAVY-DUTY DUAL VERTICAL MONITOR MOUNT

For vertical mount of dual large heavy monitors, including the most deeply curved ultrawide displays. Tool-free height & tilt adjustment of each monitor, smart features for seamless bevel alignment. The assurance of ergonomic excellence plus high product performance with Atdec.

Ergonomic & Secure for ultrawide monitors



24" to 57"



75x75
100x100



25kg (55lb)
FLAT
18kg (26.5lb)
CURVED

Perfect placement

Tool-free micro-adjustments to fine-tune monitor alignment;

- Height $\pm 6\text{mm}$ ($\pm 1/4"$)
- Levelling $\pm 2^\circ$
per monitor

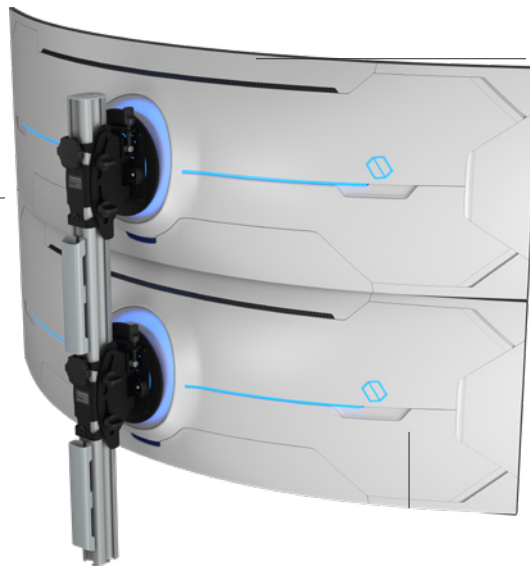


Super heavy-duty buckets

Quick Connect for displays
Tilts -8° to $+12^\circ$

Futureproof

Upgrade as desired with the modular AWM family of products



Capacity

High capacity including for curved displays

Height & tilt

Set bracket height & tilt without tools

Quality construction

Easy assembly & disassembly plus high quality recyclable material construction

Posts in silver or black



Cable management

Discrete through the post

Sturdy desk fixing

[AWMS-2-BT75-H](#) with desk clamp
[AWMS-2-BT75-G](#) with grommet

10 Year Warranty

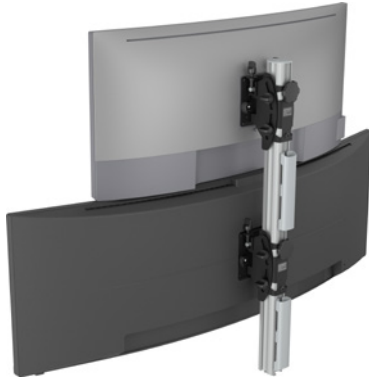
Ergonomic & Secure for ultrawide monitors



Flexibility & upgradability

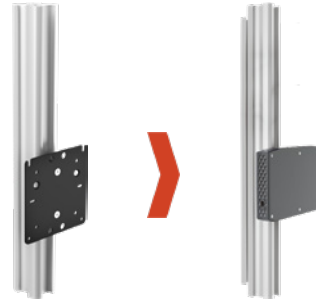
For your monitor upgrades

We design our mounts to be robust and upgradable, in the expectation that display model and/or configuration update is likely during the mount's service life. This solution has been rigorously tested for stability with a wide variety of monitor specifications.



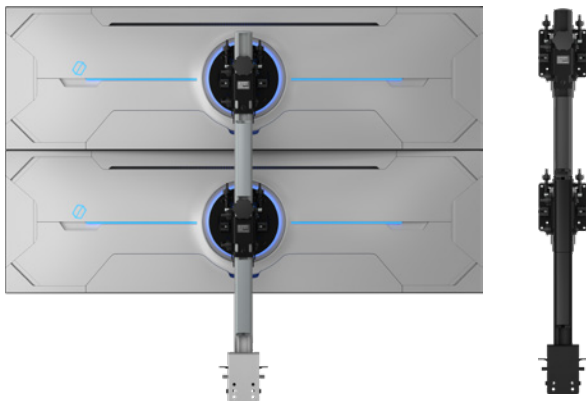
Ingenious accessories

Reclaim more of your desk space and secure your mini PC by fixing it to your monitor mount post with AC-MP mini PC mounting plate.



[SEE AC-MP ONLINE](#)

Ordering guide



AWMS-2-BT75-H with heavy duty F-clamp

The most popular of the BT family of heavy duty mounts, this solution is available in black or silver.

SILVER: AWMS-2-BT75-H-S

BLACK: AWMS-2-BT75-H-B

[SEE HD CLAMP VERSION ONLINE](#)



AWMS-2-BT75-G with grommet clamp

Perfect choice for commercial projects with furniture that can have grommets pre-drilled.

1 x AWM-P75G post (-B black or -S silver)

2 x AWM-BT-B brackets (black only)

1 x AC-GC grommet clamp (-B black or -S silver)

[SEE GROMMET VERSION ONLINE](#)



Atdec Uncover™ is where our infinite mounting possibilities become your specific mounting solutions.

[Call us to discuss your next project](#)

ATDEC Infinite Mounting Possibilities

Australia
+61 2 8729 5000
support@atdec.com
www.atdec.com.au

North America
888 303 4252
usasales@atdec.com
www.atdec.com

UK (EMEA)
+44 3330 117725
sales@atdec.co.uk
www.atdec.co.uk

New Zealand
0800 887 298
nz@atdec.com
www.atdec.co.nz