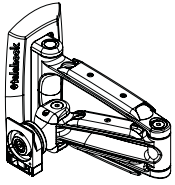
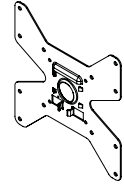


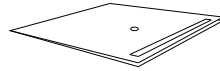
### Component Checklist



Articulated Arm



VESA Plate



Drill Guide

#### Tools Required:

- Power Drill
- 6mm (0.25") Drill Bit
- 10mm (0.4") Masonry Drill Bit
- Phillips-head Screwdriver
- 13mm (0.5") Socket Wrench or Shifter

#### Hardware



Coach Bolt (x2)



Concrete Anchor (x2)



M4/5 Spacer (x4)



Security Screw (x1)



M4/M5 Washers (x4 each)



M6/8 Spacer (x4)



3mm Allen Key

#### Display Mounting Screws



M4x16/25mm (x4 each)



M5x16/25mm (x4 each)



M6x16/30mm (x4 each)



M8x16/30mm (x4 each)

### IMPORTANT INFORMATION:

**! IMPORTANT - Install 1040 Flat Screen Wall Mount as per Installation Instructions.**

! This product supports a maximum load of 25kg (55lbs).

! This product supports VESA mounting hole configurations: VESA plate, 75x75mm, 100x100mm, 200x100mm, and 200x200mm.

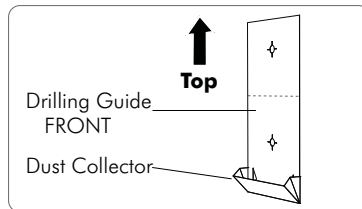
! The manufacturer accepts no responsibility for incorrect installation.

### Step 1. Check Components

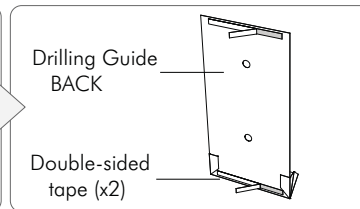
Check you have received all parts against the component checklist and Hardware above.

### Step 2. Locate Drilling Position

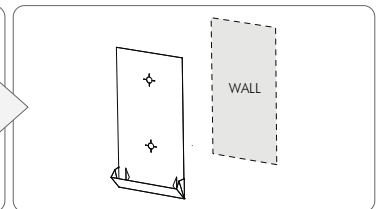
Choose the location of your Wall Mount, ensuring that the wall is structurally sound (for a timber stud wall, locate the stud using a stud detection device). Use the Drilling Guide to mark out the hole centres.



Un-fold the Drilling Guide and open the Dust Collector.



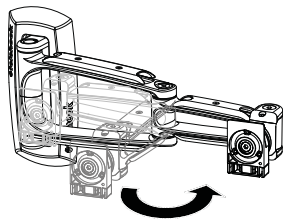
Peel away the backing from the double-sided adhesive tape.



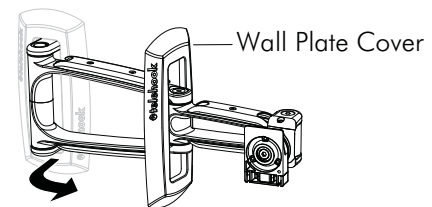
Position the Drilling Guide vertically onto the wall using a Spirit Level.

### Step 3. Attaching the Articulated Arm to the Wall

Remove the Arm from the packaging and open fully.

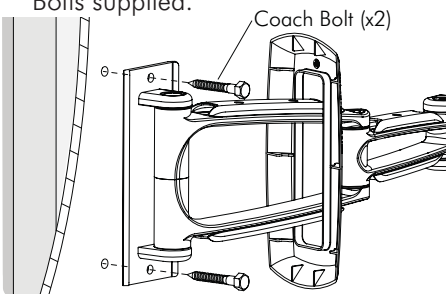


Un-clip the Wall Plate Cover and slide down the arm.



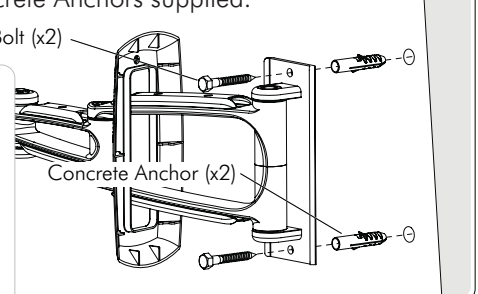
#### Timber Stud Wall

- Drill two 6mm (0.25") diameter holes, 50mm (2") deep.
- Secure the Mounting Plate to the wall using the Coach Bolts supplied.

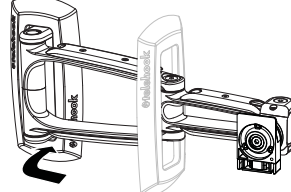


#### Masonry Wall

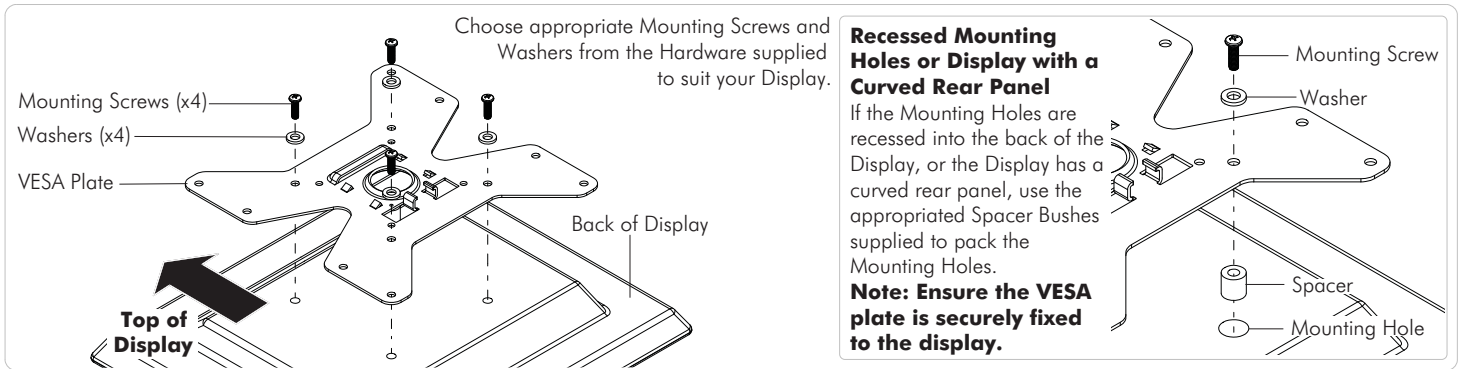
- Drill two 10mm (0.4") diameter holes, 50mm (2") deep.
- Secure the Mounting Plate to the wall using the Coach Bolts and Concrete Anchors supplied.



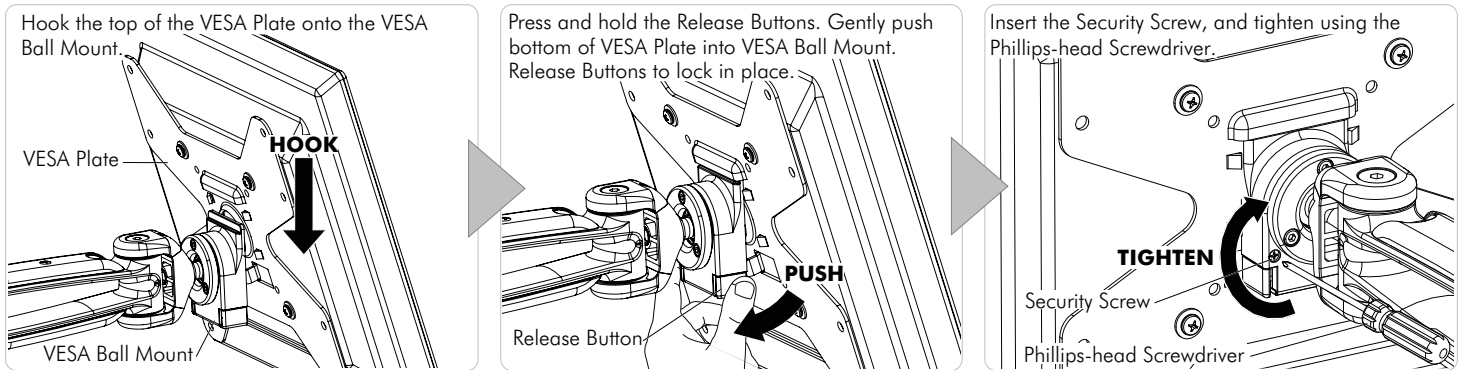
Slide the Wall Plate Cover back along the arm, and push flat against the wall.



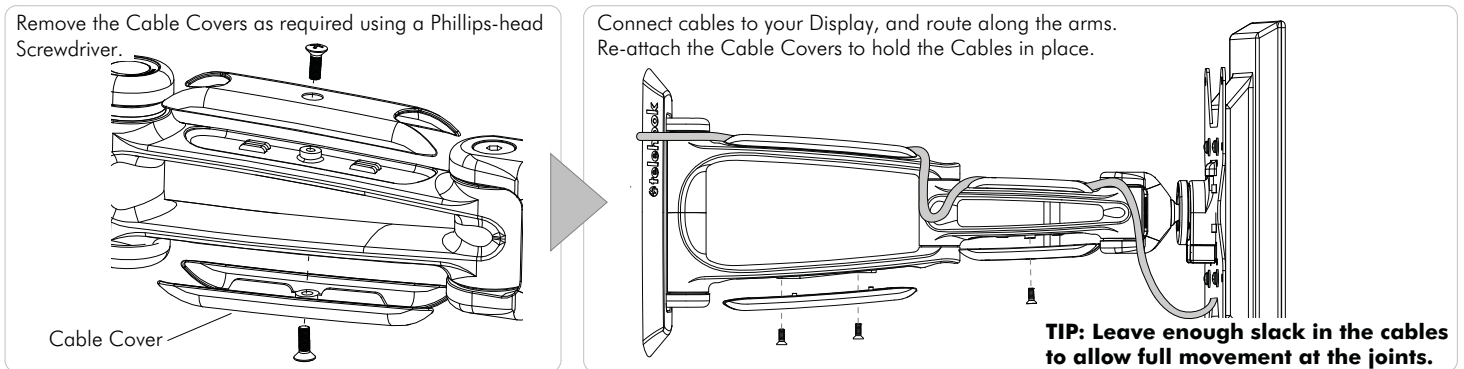
## Step 4. Attaching the VESA Plate to your Display



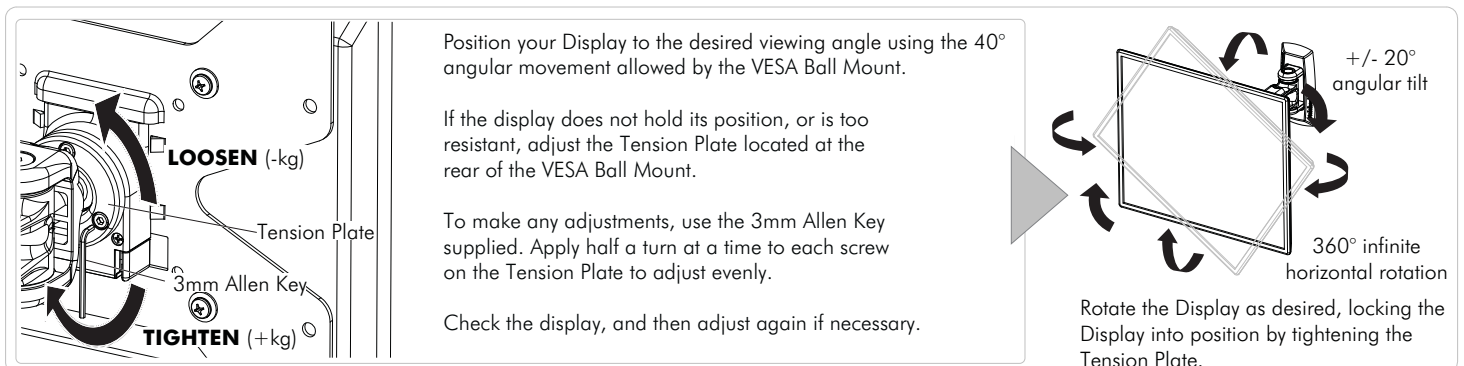
## Step 5. Attaching your Display to the Arm



## Step 6. Cable Management



## Step 7. Final Adjustment



## Installation Complete